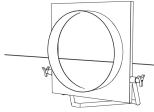
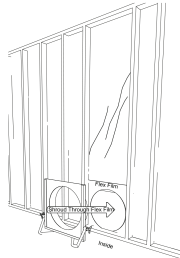


SETTING UP YOUR FLEX TUBE FLOOR SHROUD WITH BASE



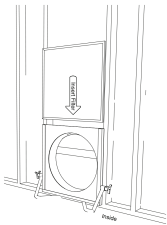
STEP 1

Assemble Base with the “V” facing the round Flex Tube opening.



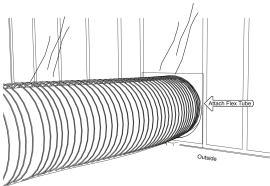
STEP 2

Working from “inside” the clean room, place the Flex Tube opening of your Flex Tube Floor Shroud through the Flex Film opening (sold separately).



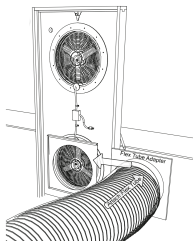
STEP 3

Still working from “inside” the clean room, insert your Reusable Filter (sold separately).



STEP 4

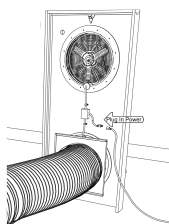
Working from “outside” the clean room, attach the 20” x 25’ Flex Tube (sold separately) to the round end of the Floor Shroud.



STEP 5

Attach the other end of the Flex Tube to your Zephyr, Tempest, or Cyclone using a Flex Tube Adapter (sold separately).

IMPORTANT: Adjust fan speeds (be sure to set BOTH). The lower fan speed (Clean Room) should be set at a lower speed than the upper fan. This prevents dust and fumes from being drawn into the Clean Room.



STEP 6

Plug it in. Remember, the fan motors are in the “on” position.

For a video tutorial and frequently asked questions, visit
WWW.NEGAIRSYS.COM

You can reach us by phone:
(770) 425-4770 or
(800) 346-6387

or by email at:
INFO@NEGAIRSYS.COM

Through passion, dedication, and innovation, our team at Negative Air Systems is continuously striving to provide quality products. Please let us know how we are doing!

